

PVC SCHEDULE 80



Tee Soc x Soc x Soc

Inch	MM	Product Code
1/4	6	2115036768
3/8	9	2115036769
1/2	12	2115036770
3/4	20	2115036771
1	25	2115036772
1 1/4	32	2115036773
1 1/2	40	2115036774
2	50	2115036775
2 1/2	65	2115036776
3	75	2115036777
4	100	2115036778
6	150	2115036780
8	200	2115036781
□ 10	250	2115036866
□ 12	300	2115036876
* 10	250	2116036782
* 12	300	2116036783
* 14	350	2116036784
* 16	400	2116036785
* 18	450	2116036126

Tee Ft x Ft x Ft

Inch	MM	Product Code
1/4	6	2115036817
3/8	9	2115036818
1/2	12	2115036819
3/4	20	2115036820
1	25	2115036821
1 1/4	32	2115036822
1 1/2	40	2115036823
2	50	2115036824
2 1/2	65	2115036825
3	75	2115036826
4	100	2115036827



Reducing Tee Soc x Soc x Soc

Inch	MM	Product Code
3/4 x 3/4 x 1/2	20 x 20 x 12	2118036786
1 x 3/4 x 1	25 x 20 x 25	2118036791
1 x 1 x 1/2	25 x 25 x 12	2118036788
1 x 1 x 3/4	25 x 25 x 20	2118036789
1 1/4 x 1 1/4 x 3/4	32 x 32 x 20	2118036793
1 1/4 x 1 1/4 x 1	32 x 32 x 25	2118036794
1 1/2 x 1 1/2 x 3/4	40 x 40 x 20	2118036795
1 1/2 x 1 1/2 x 1	40 x 40 x 25	2118036796
2 x 2 x 1/2	50 x 50 x 12	2118036797
2 x 2 x 3/4	50 x 50 x 20	2118036798
2 x 2 x 1	50 x 50 x 25	2118036799

Tee Soc x Soc x Ft

Inch	MM	Product Code
1/2	12	2115036828
3/4	20	2115036829
1	25	2115036830
2	50	2115036832

cont...

Reducing Tee Soc x Soc x Soc

Inch	MM	Product Code
2 x 2 x 1 1/2	50 x 50 x 40	2118036800
3 x 3 x 2	75 x 75 x 50	2118036802
3 x 3 x 2 1/2	75 x 75 x 65	2118036803
4 x 4 x 2	100 x 100 x 50	2118036804
4 x 4 x 3	150 x 100 x 75	2118036805
6 x 6 x 3	150 x 150 x 75	2118036807
6 x 6 x 4	150 x 150 x 100	2118036808
* 8 x 8 x 4	200 x 200 x 100	2118036809
8 x 8 x 6	200 x 200 x 150	2118036810
* 10 x 10 x 4	250 x 250 x 100	2118036919
* 10 x 10 x 6	250 x 250 x 150	2118036812
* 10 x 10 x 8	250 x 250 x 200	2118036813
* 12 x 12 x 8	300 x 300 x 200	2118036814
* 12 x 12 x 10	300 x 300 x 250	2118036815
* 14 x 14 x 10	350 x 350 x 250	2118036816
* 14 x 14 x 12	350 x 350 x 300	2118036806
* 16 x 16 x 12	400 x 400 x 300	2118036811
* 16 x 16 x 14	400 x 400 x 350	2118036831



90° Elbow Soc x Soc

Inch	MM	Product Code
□ 12	300	2016036865
* 10	250	2015036193
* 12	300	2015036194
* 14	350	2015036195
* 16	400	2015036196
* 18	450	2015036132



90° Elbow Ft x Ft

Inch	MM	Product Code
1/4	6	2016036197
3/8	9	2016036198
1/2	12	2016036199
3/4	20	2016036200
1	25	2016036201
1 1/4	32	2016036202
1 1/2	40	2016036203
2	50	2016036204
2 1/2	65	2016036205
3	75	2016036206
4	100	2016036207

90° Elbow Soc x Soc

Inch	MM	Product Code
1/4	6	2016036179
3/8	9	2016036180
1/2	12	2016036181
3/4	20	2016036182
1	25	2016036183
1 1/4	32	2016036184
1 1/2	40	2016036185
2	50	2016036186
2 1/2	65	2016036187
3	75	2016036188
4	100	2016036189
6	150	2016036191
8	200	2016036192
□ 10	250	2016036864

cont...



45° Elbow Soc x Soc

Inch	MM	Product Code
* 16	400	2006036159

90° Elbow Soc x Ft

Inch	MM	Product Code
1/2	12	2016036172
3/4	20	2016036173
1	25	2016036174
1 1/4	32	2016036175
1 1/2	40	2016036176
2	50	2016036177



45° Elbow Ft x Ft

Inch	MM	Product Code
1/4	6	2007036160
3/8	9	2007036161
1/2	12	2007036162
3/4	20	2007036163
1	25	2007036164
1 1/4	32	2007036165
1 1/2	40	2007036166
2	50	2007036167
2 1/2	65	2007036168
3	75	2007036169
4	100	2007036170



45° Elbow Soc x Soc

Inch	MM	Product Code
1/4	6	2007036142
3/8	9	2007036143
1/2	12	2007036144
3/4	20	2007036145
1	25	2007036146
1 1/4	32	2007036147
1 1/2	40	2007036148
2	50	2007036149
2 1/2	65	2007036150
3	75	2007036151
4	100	2007036152
6	150	2007036154
8	200	2007036155
□ 10	250	2007036862
□ 12	300	2007036863
* 10	250	2006036156
* 12	300	2006036157
* 14	350	2006036158

cont...



22 1/2° Elbow Soc x Soc

Inch	MM	Product Code
2	50	2151036134
3	75	2151036135
4	100	2151036136
★ 6	150	2151036137
★ 8	200	2151036138
★ 10	250	2151036139
★ 12	300	2151036140

Coupling Ft x Ft

Inch	MM	Product Code
1/4	6	2017036104
3/8	9	2017036105
1/2	12	2017036106
3/4	20	2017036107
1	25	2017036108
1 1/4	32	2017036109
1 1/2	40	2017036110
2	50	2017036111
2 1/2	65	2017036112
3	75	2017036113
4	100	2017036114



Coupling Soc x Soc

Inch	MM	Product Code
1/4	6	2017036088
3/8	9	2017036089
1/2	12	2017036090
3/4	20	2017036091
1	25	2017036092
1 1/4	32	2017036093
1 1/2	40	2017036094
2	50	2017036095
2 1/2	65	2017036096
3	75	2017036097
4	100	2017036098
6	150	2017036099
8	200	2017036100
★ 10	250	2017036101
★ 12	300	2017036102
★ 14	350	2017036103
★ 16	400	2017036889

Solvent based cement must be used when joining socket fittings.

For consistent tight joints, basic principles of solvent cementing must be followed. For step-by-step procedures contact your local representative at (780) 449-1599.

PVC SCHEDULE 80



Reducer Coupling Soc x Soc

Inch	MM	Product Code
3/4 x 1/2	20 x 12	2017036719
1 x 1/2	25 x 12	2017036720
1 x 3/4	25 x 20	2017036721
1 1/4 x 3/4	32 x 20	2017036723
1 1/4 x 1	32 x 25	2017036724
1 1/2 x 1/2	40 x 12	2017036725
1 1/2 x 3/4	40 x 20	2017036726
1 1/2 x 1	40 x 25	2017036727
1 1/2 x 1 1/4	40 x 32	2017036728
2 x 1/2	50 x 12	2017036897
2 x 1	50 x 25	2017036729
2 x 1 1/2	50 x 40	2017036731
3 x 2	75 x 50	2017036735
4 x 2	100 x 50	2017036736
4 x 3	100 x 75	2017036738
6 x 4	150 x 100	2017036740
8 x 6	200 x 150	2017036743



Reducer Coupling Ft x Ft

Inch	MM	Product Code
1/2 x 1/4	12 x 6	2017036746
3/4 x 1/2	20 x 12	2017036748
1 x 1/2	25 x 12	2017036749
1 x 3/4	25 x 20	2017036750
1 1/4 x 3/4	32 x 20	2017036751
1 1/2 x 1	40 x 25	2017036754
2 x 1 1/2	50 x 40	2017036758



Female Adapter Soc x Ft

Inch	MM	Product Code	
1/4	6	2038036209	
3/8	9	2038036210	
1/2	12	2038036211	
3/4	20	2038036212	
1	25	2038036213	
1 1/4	32	2038036214	
1 1/2	40	2038036215	
2	50	2038036216	
2 1/2	65	2038036217	
3	75	2038036218	
4	100	2038036219	
★	6	150	2038036221



Male Adapter Soc x Mt

Inch	MM	Product Code	
1/2	12	2038036420	
3/4	20	2038036421	
1	25	2038036422	
1 1/4	32	2038036423	
1 1/2	40	2038036424	
2	50	2038036425	
2 1/2	65	2038036426	
3	75	2038036427	
4	100	2038036428	
★	6	150	2038036887



Female Adapter Soc x S.S. Reinforced Ft

Inch	MM	Product Code
1/2	12	2038036971
3/4	20	2038036972
1	25	2038036973
1 1/4	32	2038036974
1 1/2	40	2038036975
2	50	2038036976
2 1/2	65	2038036977
3	75	2038036978
4	100	2038036979

Cap Soc

Inch	MM	Product Code
1/4	6	2142036056
3/8	9	2142036057
1/2	12	2142036058
3/4	20	2142036059
1	25	2142036060
1 1/4	32	2142036061
1 1/2	40	2142036062
2	50	2142036063
2 1/2	65	2142036064
3	75	2142036065
4	100	2142036066
6	150	2142036067
8	200	2142036068
* 10	250	2141036069
* 12	300	2141036070
* 14	350	-
* 16	400	2141036071



Female Adapter Spig x S.S. Reinforced Ft

Inch	MM	Product Code
1/2	12	2038036965
3/4	20	2038036966
1	25	2038036967
1 1/4	32	2038036968
1 1/2	40	2038036969
2	50	2038036970
3	75	2038236000
4	100	2038236001



Cap Ft

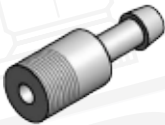
Inch	MM	Product Code
1/4	6	2142036072
3/8	9	2142036073
1/2	12	2142036074
3/4	20	2142036075
1	25	2142036076
1 1/4	32	2142036077
1 1/2	40	2142036078
2	50	2142036079
2 1/2	65	2142036080
3	75	2142036081
4	100	2142036082



Wye Soc x Soc x Soc

Inch	MM	Product Code
□ 1 1/2	40	2008036854
□ 2	50	2008036855
□ 3	75	2008036856
□ 4	100	2008036857
□ 6	150	2008036858
□ 6 x 4	150 x 100	2008036861
* 8	200	2008036859
* 8 x 6	200 x 150	2008036884

1/2" - 2" 235 PSI maximum internal pressure @ 23°C (73°F)
 3" or Larger 150 PSI maximum internal pressure @ 23°C (73°F)



Hose Adapter Hose x Mt

Inch	MM	Product Code
* 1/4	6	2038036394
* 3/8	9	2038036395
* 1/2	12	2038036396
* 3/4	20	2038036397
* 1	25	2038036398
* 1 1/4	32	2038036399
* 1 1/2	40	2038036400
* 2	50	2038036401
* 2 1/2	65	2038036402
* 3	75	2038036403
* 4	100	2038036404



Reducer Bushing Flushstyle Spig x Soc

Inch	MM	Product Code
3/8 x 1/4	9 x 6	2061036599
1/2 x 1/4	12 x 6	2061036600
1/2 x 3/8	12 x 9	2061036601
3/4 x 1/2	20 x 12	2061036604
1 x 1/2	25 x 12	2061036605
1 x 3/4	25 x 20	2061036606
1 1/4 x 1/2	32 x 12	2061036607
1 1/4 x 3/4	32 x 20	2061036608
1 1/4 x 1	32 x 25	2061036609
1 1/2 x 1/2	40 x 12	2061036610
1 1/2 x 3/4	40 x 20	2061036611
1 1/2 x 1	40 x 25	2061036612
1 1/2 x 1 1/4	40 x 32	2061036613
2 x 1/2	50 x 12	2061036614
2 x 3/4	50 x 20	2061036615
2 x 1	50 x 25	2061036616

cont...

Reducer Bushing Flushstyle Spig x Soc

Inch	MM	Product Code
2 x 1 1/4	50 x 32	2061036617
2 x 1 1/2	50 x 40	2061036618
2 1/2 x 1 1/4	65 x 32	2061036620
2 1/2 x 1 1/2	65 x 40	2061036621
2 1/2 x 2	65 x 50	2061036622
3 x 1	75 x 25	2061036623
3 x 1 1/2	75 x 40	2061036624
3 x 2	75 x 50	2061036625
3 x 2 1/2	75 x 65	2061036626
4 x 2	100 x 50	2061036628
4 x 3	100 x 75	2061036630
6 x 2	150 x 50	2061036632
6 x 3	150 x 75	2061036633
6 x 4	150 x 100	2061036634
8 x 6	200 x 150	2061036638
* 10 x 6	250 x 150	2061036922
* 10 x 8	250 x 200	2061036270
* 12 x 10	300 x 250	2061036208
12 x 6	300 x 150	2061036908
12 x 8	300 x 200	2061036645



Reducer Bushing Flushstyle Spig x Ft

Inch	MM	Product Code
1 1/2 x 3/4	40 x 20	2061036692
1 1/2 x 1	40 x 25	2061036693
1 1/2 x 1 1/4	40 x 32	2061036694
2 x 1/2	50 x 12	2061036695
2 x 3/4	50 x 20	2061036696
2 x 1	50 x 25	2061036697
2 x 1 1/4	50 x 32	2061036698
2 x 1 1/2	50 x 40	2061036699
2 1/2 x 3/4	65 x 20	2061036700
2 1/2 x 1	65 x 25	2061036701
2 1/2 x 1 1/4	65 x 32	2061036702
2 1/2 x 1 1/2	65 x 40	2061036703
2 1/2 x 2	65 x 50	2061036704
3 x 3/4	75 x 20	2061036705
3 x 1	75 x 25	2061036706
3 x 1 1/4	75 x 32	2061036707
3 x 1 1/2	75 x 40	2061036708
3 x 2	75 x 50	2061036709
3 x 2 1/2	75 x 65	2061036710
4 x 2	100 x 50	2061036711
4 x 2 1/2	100 x 65	2061036712
4 x 3	100 x 75	2061036713
6 x 2	150 x 50	2061036714
6 x 3	150 x 75	2061036715
6 x 4	150 x 100	2061036716



Reducer Bushing Flushstyle Spig x Ft

Inch	MM	Product Code
3/8 x 1/4	9 x 6	2061036679
1/2 x 1/4	12 x 6	2061036681
1/2 x 3/8	12 x 9	2061036682
3/4 x 1/4	20 x 6	2061036683
3/4 x 1/2	20 x 12	2061036684
1 x 3/8	25 x 9	2061036685
1 x 1/2	25 x 12	2061036686
1 x 3/4	25 x 20	2061036687
1 1/4 x 1/2	32 x 12	2061036688
1 1/4 x 3/4	32 x 20	2061036689
1 1/4 x 1	32 x 25	2061036690
1 1/2 x 1/2	40 x 12	2061036691

cont..

TT Bushing Flushstyle Mt x Ft

Inch	MM	Product Code
3/8 x 1/4	9 x 6	2061036647
1/2 x 1/4	12 x 6	2061036648
1/2 x 3/8	12 x 9	2061036649
3/4 x 1/4	20 x 6	2061036651
3/4 x 3/8	20 x 9	2061036652
3/4 x 1/2	20 x 12	2061036653
1 x 1/4	25 x 6	2061036654
1 x 3/8	25 x 9	2061036655

cont..

TT Bushing Flushstyle Mt x Ft

Inch	MM	Product Code
1 x 1/2	25 x 12	2061036656
1 x 3/4	25 x 20	2061036657
1 1/4 x 1/2	32 x 12	2061036658
1 1/4 x 3/4	32 x 20	2061036659
1 1/4 x 1	32 x 25	2061036660
1 1/2 x 1/2	40 x 12	2061036661
1 1/2 x 3/4	40 x 20	2061036662
1 1/2 x 1	40 x 25	2061036663
1 1/2 x 1 1/4	40 x 32	2061036664
2 x 1/2	50 x 12	2061036665
2 x 3/4	50 x 20	2061036666
2 x 1	50 x 25	2061036667
2 x 1 1/4	50 x 32	2061036668
2 x 1 1/2	50 x 40	2061036669
2 1/2 x 2	65 x 50	2061036672
3 x 1 1/2	75 x 40	2061036673
3 x 2	75 x 50	2061036674
3 x 2 1/2	75 x 65	2061036675
4 x 2	100 x 50	2061036676
4 x 3	100 x 75	2061036677



Plug Mt

Inch	MM	Product Code
1/4	6	2140036568
3/8	9	2140036569
1/2	12	2140036570
3/4	20	2140036571
1	25	2140036572
1 1/4	32	2140036573
1 1/2	40	2140036574
2	50	2140036575
2 1/2	65	2140036576
3	75	2140036577
4	100	2140036578
6	150	2140036579



Plug Spig

Inch	MM	Product Code
2	50	2140036585



6 D 90° Bend Spig x Spig

Inch	MM	Product Code
* 1/2	12	-
* 3/4	20	2021036027
* 1	25	2021036028
* 1 1/4	32	2021036029
* 1 1/2	40	2021036030
* 2	50	2021036031
* 2 1/2	65	2021036032
* 3	75	2021036033
* 4	100	2021036034
* 6	150	2021036035
* 8	200	2021036036
* 10	250	2021036868
* 12	300	-

6 D 45° Bend Spig x Spig

Inch	MM	Product Code
* 10	250	-
* 12	300	-

PVC “U” Bend 4” O.C. For Ice Rink Piping

Inch	MM	Product Code
* 1	25	2021059019
* 1	25	-

Option 1: Barbed End
Option 2: Plain End (Spigot)



6 D 45° Bend Spig x Spig

Inch	MM	Product Code
* 1/2	12	-
* 3/4	20	2021036020
* 1	25	2021036021
* 1 1/4	32	-
* 1 1/2	40	2021036022
* 2	50	2021036023
* 2 1/2	65	2021036867
* 3	75	2021036024
* 4	100	2021036025
* 6	150	2021036026
* 8	200	-

Inch MM Product Code

Fits 1" I.D. Poly Pipe

cont..

PVC SCHEDULE 80



Cross Soc x Soc x Soc x Soc

Inch	MM	Product Code
1/2	12	2012036116
3/4	20	2012036117
1	25	2012036118
1 1/4	32	2012036119
1 1/2	40	2012036120
2	50	2012036121
2 1/2	65	2012036122
3	75	2012036123
4	100	2012036124
* 6	150	2012036125

Union Soc x Soc Viton® O-ring Seal

Inch	MM	Product Code
1/4	6	2019036833
3/8	9	2019036834
1/2	12	2019036835
3/4	20	2019036836
1	25	2019036837
1 1/4	32	2019036838
1 1/2	40	2019036839
2	50	2019036840
3	75	2019036842
4	100	2019036843



30° Elbow Soc x Soc

Inch	MM	Product Code
6	150	2021236003

Union Ft x Ft Viton® O-ring Seal

Inch	MM	Product Code
1/4	6	2019036844
3/8	9	2019036845
1/2	12	2019036846
3/4	20	2019036847
1	25	2019036848
1 1/4	32	2019036849
1 1/2	40	2019036850
2	50	2019036851
3	75	2019036852
4	100	2019036853



Union Soc x Ft Viton® O-ring Seal

Inch	MM	Product Code
1/2	12	2019036410
3/4	20	2019036411
1	25	2019036412
1 1/4	32	2019036413
1 1/2	40	2019036414
2	50	2019036415
3	75	2019236010
4	100	2019236011

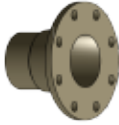
PVC Tank Adapter Ft x Ft

Inch	MM	Product Code
1/2	12	2037036047
3/4	20	2037036048
1	25	2037036049
1 1/4	32	2037036050
1 1/2	40	2037036051
2	50	2037036052
3	75	2037036054
4	100	2037036055
* 6	150	-



PVC Tank Adapter Soc x Ft

Inch	MM	Product Code
1/2	12	2037036038
3/4	20	2037036039
1	25	2037036040
1 1/4	32	2037036041
1 1/2	40	2037036042
2	50	2037036043
3	75	2037036045
4	100	2037036046
* 6	150	-



Flange Soc Solid Style

Inch	MM	Product Code
1/2	12	2039036223
3/4	20	2039036224
1	25	2039036225
1 1/4	32	2039036226
1 1/2	40	2039036227
2	50	2039036228
2 1/2	65	2039036229
3	75	2039036230
4	100	2039036231
5	125	2039036232
6	150	2039036233
8	200	2039036234
* 10	250	2039036235
* 12	300	2039036236
* 14	350	2039036237
* 16	400	2039036238
* 18	450	2039036870
* 20	500	-
* 24	600	2039036239



Flange Blind

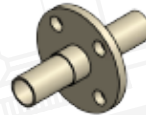
Inch	MM	Product Code
1/2	12	2003036250
3/4	20	2003036251
1	25	2003036252
1 1/4	32	2003036253
1 1/2	40	2003036254
2	50	2003036255
2 1/2	65	2003036256
3	75	2003036257

Flange Blind

Inch	MM	Product Code
4	100	2003036258
6	150	2003036259
8	200	2003036260
* 10	250	2003036261
* 12	300	2003036262
* ❖ 14	350	2003036263
* ❖ 16	400	2003036264
* ❖ 18	450	2003036265
* ❖ 20	500	-
* ❖ 24	600	2003036266

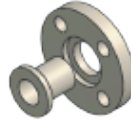
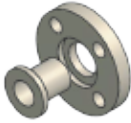
❖ Domed Flange

All flanges are rated at 150 PSI @ 23°C (73°F), non-shock. Standard 150 lb bolting pattern. Maximum continuous working pressure is 50 PSI for blind flanges 14"-24".



No Leak Flange Spig x Spig

Inch	MM	Product Code
* 1/2	12	2153036331
* 3/4	20	2153036332
* 1	25	2153036923
* 1 1/4	32	2153036333
* 1 1/2	40	2153036334
* 2	50	2153036335
* 2 1/2	65	2153036336
* 3	75	2153036337
* 4	100	2153036338
* 6	150	2153036339
* 8	200	2153036340
* 10	250	2153036341
* 12	300	2153036342
* 14	350	2153036915
* 16	400	2153036343
* 18	450	2153036871
* 20	500	-
* 24	600	2153036924



Heavy Duty Vanstone Flange Spig with Fibre-Loc Ring

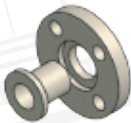
Inch	MM	Product Code
1 1/2	40	2039036323
2	50	2039036324
3	75	2039036326
4	100	2039036416
6	150	2039036417
8	200	2039036418
*	250	2039036419
*	300	2039036429
*	14 >>	2039036358
*	16 >>	2039036359

>> Molded hub c/w coated metal rings.

Vanstone Flange Spig with PVC Ring

Inch	MM	Product Code
1/2	12	2039036344
3/4	20	2039036345
1	25	2039036346
1 1/4	32	2039036347
1 1/2	40	2039036348
2	50	2039036349
2 1/2	65	2039036350
3	75	2039036351
4	100	2039036352
5	125	2039036353
6	150	2039036354
8	200	2039036355
10 >>	250	2039036356
12 >>	300	2039036357

>> Molded hub c/w coated metal rings.



Vanstone Flange Spig with Steel Ring

Inch	MM	Product Code
*	18	2039036947
*	20	2039036913
*	24	2039036914

NOTE: 18"-24" Flanges are rated at 50 PSI maximum operating.

Vanstone Flange Spig with PVC Ring

Inch	MM	Product Code
1/2	12	2039036374
3/4	20	2039036375
1	25	2039036376
1 1/4	32	2039036377
1 1/2	40	2039036378
2	50	2039036379
2 1/2	65	2039036380

Heavy Duty Vanstone Flange Spig with Fibre-Loc Ring

Inch	MM	Product Code
3	75	2039036381
4	100	2039036382
6	150	2039036383
8	200	2039036384

CAUTION: When thermoplastic flanges are used with butterfly valves or other equipment, where a full face continuous support does not exist, a back-up ring or fiber-glass reinforcement should be used to prevent cracking of the flange face.

cont..

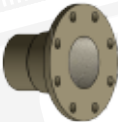
Vanstone Flange Spig

Inch	MM	Product Code
★ 10	250	2039036321
★ 12	300	2039036406



Vanstone Flange Ft

Inch	MM	Product Code
1/2	12	2039036385
3/4	20	2039036386
1	25	2039036387
1 1/4	32	2039036388
1 1/2	40	2039036389
2	50	2039036390
2 1/2	65	2039036391
3	75	2039036392
4	100	2039036393



1/8" Flange Gasket Neoprene

Inch	MM	Product Code
1/2	12	9046036296
3/4	20	9046036297
1	25	9046036298
1 1/4	32	9046036299
1 1/2	40	9046036300
2	50	9046036301
2 1/2	65	9046036302
3	75	9046036303
4	100	9046036304
5	125	9046036305
6	150	9046036306
8	200	9046036307
10	250	9046036308
12	300	9046036309
14	350	9046036310
16	400	9046036311
18	450	9046036312
20	500	9046036313
24	600	9046036314

Flange Ft Solid Style

Inch	MM	Product Code
1/2	12	2039036240
3/4	20	2039036241
1	25	2039036242
1 1/4	32	2039036243
1 1/2	40	2039036244
2	50	2039036245
2 1/2	65	2039036246
3	75	2039036247
4	100	2039036248
6	150	2039036249

CAUTION: When thermoplastic flanges are used with butterfly valves or other equipment, where a full face continuous support does not exist, a back-up ring or fiber-glass reinforcement should be used to prevent cracking of the flange face.



PVC Nipples 1/4" (6mm) Diameter

	Inch	MM	Product Code
close	7/8	22	2020036434
	1 1/2	40	2020036445
	2	50	2020036456
	2 1/2	65	2020036457
	3	75	2020036458
	3 1/2	90	2020036459
	4	100	2020036460
	4 1/2	115	2020036461
	5	125	2020036462
	6	150	2020036463
	10	250	2020236012
	12	300	2020236013

PVC Nipples 1/2" (12mm) Diameter

	Inch	MM	Product Code
close	1 1/8	28	2020036436
	1 1/2	40	2020036447
	2	50	2020036475
	2 1/2	65	2020036476
	3	75	2020036477
	3 1/2	90	2020036478
	4	100	2020036479
	4 1/2	115	2020036480
	5	125	2020036481
	5 1/2	140	2020036482
	6	150	2020036483
	8	200	2020036484
	10	250	2020036485
	12	300	2020036486



PVC Nipples 3/8" (9mm) Diameter

	Inch	MM	Product Code
close	1	25	2020036435
	1 1/2	40	2020036446
	2	50	2020036466
	2 1/2	65	2020036467
	3	75	2020036468
	3 1/2	90	2020036469
	4	100	2020036470
	4 1/2	115	2020036471
	5	125	2020036472
	6	150	2020036473
	8	200	2020036474

PVC SCHEDULE 80



PVC Nipples 1" (25mm) Diameter

Inch	MM	Product Code
8	200	2020036512
10	250	2020036514
12	300	2020036515

PVC Nipples 3/4" (20mm) Diameter

Inch	MM	Product Code
close 1 3/8	35	2020036437
1 1/2	40	2020036448
2	50	2020036490
2 1/2	65	2020036491
3	75	2020036492
3 1/2	90	2020036493
4	100	2020036494
4 1/2	115	2020036495
5	125	2020036496
5 1/2	140	2020036497
6	150	2020036498
8	200	2020036500
10	250	2020036501
12	300	2020036502



PVC Nipples 1 1/4" (32mm) Diameter

Inch	MM	Product Code
close 1 5/8	41	2020036439
2	50	2020036450
2 1/2	65	2020036516
3	75	2020036517
3 1/2	90	2020036518
4	100	2020036519
4 1/2	115	2020036520
5	125	2020036521
6	150	2020036522
8	200	2020036523
10	250	2020036524
12	300	2020036525



PVC Nipples 1" (25mm) Diameter

Inch	MM	Product Code
close 1 1/2	40	2020036438
2	50	2020036449
2 1/2	65	2020036504
3	75	2020036505
3 1/2	90	2020036506
4	100	2020036507
4 1/2	115	2020036508
5	125	2020036509
5 1/2	140	2020036510
6	150	2020036511

cont...

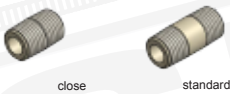


PVC Nipples 1 1/2" (40mm) Diameter

	Inch	MM	Product Code
close	1 3/4	45	2020036440
	2	50	2020036451
	2 1/2	65	2020036526
	3	75	2020036527
	3 1/2	90	2020036528
	4	100	2020036529
	4 1/2	115	2020036530
	5	125	2020036531
	5 1/2	140	2020036532
	6	150	2020036533
	8	200	2020036534
	10	250	2020036535
	12	300	2020036536

PVC Nipples 2 1/2" (65mm) Diameter

	Inch	MM	Product Code
close	2 1/2	65	2020036442
	3	75	2020036549
	4	100	2020036550
	6	150	2020036551
	8	200	2020036552
	12	300	2020036553



PVC Nipples 2" (50mm) Diameter

	Inch	MM	Product Code
close	2	50	2020036441
	2 1/2	65	2020036452
	3	75	2020036539
	3 1/2	90	2020036540
	4	100	2020036541
	4 1/2	115	2020036542
	5	125	2020036543
	5 1/2	140	2020036544
	6	150	2020036545
	8	200	2020036546
	10	250	2020036547
	12	300	2020036548

PVC Nipples 3" (75mm) Diameter

	Inch	MM	Product Code
close	2 5/8	67	2020036443
	3	75	2020036554
	4	100	2020036555
	5	125	2020036556
	6	150	2020036557
	8	200	2020036558
	10	250	2020036559
	12	300	2020036560

PVC SCHEDULE 80



close



standard



PVC Nipples 4" (100mm) Diameter

	Inch	MM	Product Code
close	2 7/8	72	2020036444
	4	100	2020036562
	5	125	2020036563
	6	150	2020036564
	8	200	2020036565
	10	250	2020036566
	12	300	2020036567

Pipe Straps PVC Coated Steel 2 Holes

	Inch	MM	Product Code
	2 1/2	65	2070036006
	3	75	2070036007
	3 1/2	90	2070036008
	4	100	2070036009
	5	125	2070036010
	6	150	2070036011

Polypropylene Pipe Clamps

	Inch	MM	Product Code
	1/2	12	2070035180
	3/4	20	2070035181
	1	25	2070035182
	1 1/4	32	2070035183
	1 1/2	40	2070035184
	2	50	2070035185



PVC Pipe Straps 2 Holes

	Inch	MM	Product Code
	1/2	12	2070036000
	3/4	20	2070036001
	1	25	2070036002
	1 1/4	32	2070036003
	1 1/2	40	2070036004
	2	50	2070036005

Strut Base

	Inch	MM	Product Code
Strut Base	-	-	2070035186

NOTE: Strut Bases are sold individually, two Strut Bases are required to create one Strut Base unit.

Soc
Spig
Ft
Mt

Solvent Weld Socket
Spigot or plain end
Female iron pipe thread
Male iron pipe thread

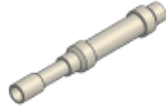
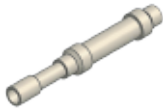
*

Fabricated fittings

o

Molded fittings: 150 PSI max.

working pressure, non-shock @ 23°C (73°F)

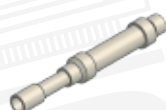
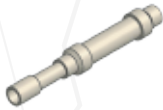


PVC Expansion Joint 6" Travel EPDM

Inch	MM	Product Code
1/2	12	2011136115
3/4	20	2011136117
1	25	2011136119
1 1/2	40	2011136121
2	50	2011136123
3	75	2011136125
4	100	2011136127

PVC Expansion Joint 6" Travel Viton®

Inch	MM	Product Code
1/2	12	2011136101
3/4	20	2011136103
1	25	2011136105
2	50	2011136109
3	75	2011136111
4	100	2011136113



PVC Expansion Joint 12" Travel EPDM

Inch	MM	Product Code
1/2	12	2011136116
3/4	20	2011136118
1	25	2011136120
1 1/2	40	2011136122
2	50	2011136124
3	75	2011136126
4	100	2011136128

PVC Expansion Joint 12" Travel Viton®

Inch	MM	Product Code
1/2	12	2011136102
2	50	2011136110
3	75	2011136112
4	100	2011136114

CORROSION RESISTANT PRODUCTS & MANUFACTURING LTD.