



## Tee Soc x Soc x Soc

Inch	MM	Product Code
1/2	12	2115035775
3/4	20	2115035776
1	25	2115035777
1 1/4	32	2115035778
1 1/2	40	2115035779
2	50	2115035780
2 1/2	65	2115035781
3	75	2115035782
4	100	2115035783
5	125	2115035784
6	150	2115035785
8	200	2115035786
□ 10	250	2115035930
□ 12	300	2115035931
* 10	250	-
* 12	300	2116035787
* 14	350	2116035788
* 16	400	-
* 18	450	-
* 20	500	-
* 24	600	-



## Reducing Tee Soc x Soc x Soc

Inch	MM	Product Code
1/2 x 1/2 x 3/4	12 x 12 x 20	2118035789
1/2 x 1/2 x 1	12 x 12 x 25	2118035354
3/4 x 1/2 x 1/2	20 x 12 x 12	2118035790
3/4 x 1/2 x 3/4	20 x 12 x 20	2118235007

cont...

## Reducing Tee Soc x Soc x Soc

Inch	MM	Product Code
3/4 x 3/4 x 1/2	20 x 20 x 12	2118035792
3/4 x 3/4 x 1	20 x 20 x 25	2118035791
1 x 1/2 x 1	25 x 12 x 25	2118235008
1 x 3/4 x 1/2	25 x 20 x 12	2118235009
1 x 3/4 x 3/4	25 x 20 x 20	2118035994
1 x 3/4 x 1	25 x 20 x 25	2118035962
1 x 1 x 1/2	25 x 25 x 12	2118035794
1 x 1 x 3/4	25 x 25 x 20	2118035795
1 x 1 x 1 1/4	25 x 25 x 32	2118035989
1 x 1 x 1 1/2	25 x 25 x 40	2118035793
1 1/4 x 1 x 3/4	32 x 25 x 20	2118035796
1 1/4 x 1 x 1	32 x 25 x 25	2118235011
1 1/4 x 1 1/4 x 1/2	32 x 32 x 12	2118035797
1 1/4 x 1 1/4 x 3/4	32 x 32 x 20	2118035798
1 1/4 x 1 1/4 x 1	32 x 32 x 25	2118035799
1 1/4 x 1 1/4 x 1 1/2	32 x 32 x 40	2118235012
1 1/2 x 1 1/4 x 1/2	40 x 32 x 12	2118235014
1 1/2 x 1 1/4 x 3/4	40 x 32 x 20	2118235015
1 1/2 x 1 1/4 x 1	40 x 32 x 25	2118035959
1 1/2 x 1 1/2 x 1/2	40 x 40 x 12	2118035800
1 1/2 x 1 1/2 x 3/4	40 x 40 x 20	2118035801
1 1/2 x 1 1/2 x 1	40 x 40 x 25	2118035802
1 1/2 x 1 1/2 x 1 1/4	40 x 40 x 32	2118035803
1 1/2 x 1 1/2 x 2	40 x 40 x 50	2118035082
1 1/2 x 1 1/2 x 2 1/2	40 x 40 x 65	2118235016
2 x 1 1/2 x 3/4	50 x 40 x 20	2118235017
2 x 1 1/2 x 1	50 x 40 x 25	2118035804
2 x 1 1/2 x 1 1/2	50 x 40 x 40	2118035805
2 x 2 x 1/2	50 x 50 x 12	2118035806
2 x 2 x 3/4	50 x 50 x 20	2118035807
2 x 2 x 1	50 x 50 x 25	2118035808
2 x 2 x 1 1/4	50 x 50 x 32	2118035809
2 x 2 x 1 1/2	50 x 50 x 40	2118035810
2 1/2 x 2 1/2 x 1/2	65 x 65 x 12	2118035811
2 1/2 x 2 1/2 x 3/4	65 x 65 x 20	2118035812
2 1/2 x 2 1/2 x 1	65 x 65 x 25	2118035813
2 1/2 x 2 1/2 x 1 1/4	65 x 65 x 32	2118035814
2 1/2 x 2 1/2 x 1 1/2	65 x 65 x 40	2118035815
2 1/2 x 2 1/2 x 2	65 x 65 x 50	2118035816
3 x 3 x 1/2	75 x 75 x 12	2118035817

cont...

**Reducing Tee Soc x Soc x Soc**

Inch	MM	Product Code
3 x 3 x 3/4	75 x 75 x 20	2118035818
3 x 3 x 1	75 x 75 x 25	2118035819
3 x 3 x 1 1/4	75 x 75 x 32	2118035820
3 x 3 x 1 1/2	75 x 75 x 40	2118035821
3 x 3 x 2	75 x 75 x 50	2118035822
3 x 3 x 2 1/2	75 x 75 x 65	2118035823
3 x 3 x 4	75 x 75 x 100	2118235018
4 x 4 x 3/4	100 x 100 x 20	2118035824
4 x 4 x 1	100 x 100 x 25	2118035825
4 x 4 x 1 1/4	100 x 100 x 32	2118035826
4 x 4 x 1 1/2	100 x 100 x 40	2118035827
4 x 4 x 2	100 x 100 x 50	2118035828
4 x 4 x 3	100 x 100 x 75	2118035829
5 x 5 x 2	125 x 125 x 50	2118035956
5 x 5 x 3	125 x 125 x 75	2118035830
5 x 5 x 4	125 x 125 x 100	2118035831
6 x 6 x 2	150 x 150 x 50	2118035832
6 x 6 x 3	150 x 150 x 75	2118035833
6 x 6 x 4	150 x 150 x 100	2118035834
8 x 8 x 3	200 x 200 x 75	2118035835
8 x 8 x 4	200 x 200 x 100	2118035836
8 x 8 x 6	200 x 200 x 150	2118035837
* 10 x 10 x 4	250 x 250 x 100	2118035971
* 10 x 10 x 6	250 x 250 x 150	2118035838
* 10 x 10 x 8	250 x 250 x 200	2118035839
* 12 x 12 x 4	300 x 300 x 100	-
* 12 x 12 x 6	300 x 300 x 150	2118035840
* 12 x 12 x 8	300 x 300 x 200	2118035949
* 12 x 12 x 10	300 x 300 x 250	-
* 14 x 14 x 6	350 x 350 x 150	2118035841
* 14 x 14 x 8	350 x 350 x 200	2118035961
* 14 x 14 x 10	350 x 350 x 250	2118035842
* 14 x 14 x 12	350 x 350 x 300	-
* 16 x 16 x 8	400 x 400 x 200	-
* 16 x 16 x 10	400 x 400 x 250	2118035843
* 16 x 16 x 12	400 x 400 x 300	-
* 16 x 16 x 14	400 x 400 x 350	-
* 18 x 18 x 8	450 x 450 x 200	-
* 18 x 18 x 10	450 x 450 x 250	-
* 18 x 18 x 12	450 x 450 x 300	-
* 18 x 18 x 14	450 x 450 x 350	-
* 18 x 18 x 16	450 x 450 x 400	-

cont...

**Reducing Tee Soc x Soc x Soc**

Inch	MM	Product Code
* 20 x 20 x 12	500 x 500 x 300	-
* 20 x 20 x 14	500 x 500 x 350	-
* 20 x 20 x 16	500 x 500 x 400	-
* 20 x 20 x 18	500 x 500 x 450	-
* 24 x 24 x 14	600 x 600 x 350	-
* 24 x 24 x 16	600 x 600 x 400	-
* 24 x 24 x 18	600 x 600 x 450	-
* 24 x 24 x 20	600 x 600 x 500	-



**Reducing Tee Soc x Soc x Ft**

Inch	MM	Product Code
1/2 x 1/2 x 3/4	12 x 12 x 20	2118035860
3/4 x 1/2 x 1/2	20 x 12 x 12	2118035862
3/4 x 1/2 x 3/4	20 x 12 x 20	2118235019
3/4 x 3/4 x 1/2	20 x 20 x 12	2118035863
1 x 3/4 x 1/2	25 x 20 x 12	2118035867
1 x 1 x 1/2	25 x 25 x 12	2118035865
1 x 1 x 3/4	25 x 25 x 20	2118035866
1 1/4 x 1 x 1/2	32 x 25 x 12	2118035868
1 1/4 x 1 x 1	32 x 25 x 25	2118235020
1 1/4 x 1 1/4 x 1/2	32 x 32 x 12	2118035869
1 1/4 x 1 1/4 x 3/4	32 x 32 x 20	2118035870
1 1/4 x 1 1/4 x 1	32 x 32 x 25	2118035871
1 1/2 x 1 1/4 x 1/2	40 x 32 x 12	2118235021
1 1/2 x 1 1/4 x 1	40 x 32 x 25	2118235022
1 1/2 x 1 1/2 x 1/2	40 x 40 x 12	2118035873
1 1/2 x 1 1/2 x 3/4	40 x 40 x 20	2118035874
1 1/2 x 1 1/2 x 1	40 x 40 x 25	2118035875
1 1/2 x 1 1/2 x 1 1/4	40 x 40 x 32	2118035876
2 x 1 1/2 x 3/4	50 x 40 x 20	2118235023
2 x 1 1/2 x 1	50 x 40 x 25	2118235024
2 x 2 x 1/2	50 x 50 x 12	2118035877
2 x 2 x 3/4	50 x 50 x 20	2118035878
2 x 2 x 1	50 x 50 x 25	2118035879

cont...

# PVC SCHEDULE 40

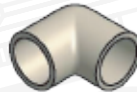
## Reducing Tee Soc x Soc x Ft

Inch	MM	Product Code
2 x 2 x 1 1/4	50 x 50 x 32	2118035880
2 x 2 x 1 1/2	50 x 50 x 40	2118035881
2 1/2 x 2 1/2 x 1/2	65 x 65 x 12	2118235025
2 1/2 x 2 1/2 x 3/4	65 x 65 x 20	2118035592
2 1/2 x 2 1/2 x 1	65 x 65 x 25	2118035882
2 1/2 x 2 1/2 x 1 1/4	65 x 65 x 32	2118035883
2 1/2 x 2 1/2 x 1 1/2	65 x 65 x 40	2118035884
3 x 3 x 1/2	75 x 75 x 12	2118035885
3 x 3 x 3/4	75 x 75 x 20	2118035886
3 x 3 x 1	75 x 75 x 25	2118035887
3 x 3 x 1 1/4	75 x 75 x 32	2118035888
3 x 3 x 1 1/2	75 x 75 x 40	2118035889
3 x 3 x 2	75 x 75 x 50	2118035890
4 x 4 x 1	100 x 100 x 25	2118035891
4 x 4 x 1 1/2	100 x 100 x 40	2118035893
4 x 4 x 2	100 x 100 x 50	2118035894
4 x 4 x 3	100 x 100 x 75	2118035895
5 x 5 x 4	125 x 125 x 100	2118235026
6 x 6 x 2	150 x 150 x 50	2118035896
6 x 6 x 3	150 x 150 x 75	2118235027
6 x 6 x 4	150 x 150 x 100	2118035897
8 x 8 x 3	200 x 200 x 75	2118235028



## Tee Ft x Ft x Ft

Inch	MM	Product Code
1/2	12	2115035844
3/4	20	2115035845
1	25	2115035846
1 1/4	32	2115035847
1 1/2	40	2115035848
2	50	2115035849



## 90° Elbow Soc x Soc

Inch	MM	Product Code
1/2	12	2016035519
3/4	20	2016035520
1	25	2016035521
1 1/4	32	2016035522
1 1/2	40	2016035523
2	50	2016035524
2 1/2	65	2016035525
3	75	2016035526
4	100	2016035527
5	125	2016035528
6	150	2016035529
8	200	2016035530
□ 10	250	2016035928
□ 12	300	2016035929
* 10	250	2015035531
* 12	300	2015035532
* 14	350	2015035533
* 16	400	2015035534

## Tee Soc x Soc x Ft

Inch	MM	Product Code
1/2	12	2115035851
3/4	20	2115035852
1	25	2115035853
1 1/4	32	2115035854
1 1/2	40	2115035855
2	50	2115035856
2 1/2	65	2115035857
3	75	2115035858
4	100	2115035859

cont...

90° Elbow Soc x Soc

Inch	MM	Product Code
* 18	450	-
* 20	500	-
* 24	600	-



90° Elbow Soc x Ft

Inch	MM	Product Code
1/2	12	2016035506
3/4	20	2016035507
1	25	2016035508
1 1/4	32	2016035509
1 1/2	40	2016035510
2	50	2016035511
2 1/2	65	2016035512
3	75	2016035589
4	100	2016035513



90° Elbow Ft x Ft

Inch	MM	Product Code
1/2	12	2016035538
3/4	20	2016035539
1	25	2016035540
1 1/4	32	2016035541
1 1/2	40	2016035542
2	50	2016035543

90° Elbow Reducing Soc x Soc

Inch	MM	Product Code
3/4 x 1/2	20 x 12	2016035535
1 x 1/2	25 x 12	2016035536
1 x 3/4	25 x 20	2016035978
1 1/4 x 1/2	32 x 12	2016235029
1 1/4 x 3/4	32 x 20	2016235030
1 1/4 x 1	32 x 25	2016035991
1 1/2 x 1/2	40 x 12	2016235031
1 1/2 x 1	40 x 25	2016235032
2 x 1 1/2	50 x 40	2016035537



90° Elbow Reducing Soc x Ft

Inch	MM	Product Code
1/2 x 3/4	12 x 20	2016035514
3/4 x 1/2	20 x 12	2016035515
1 x 1/2	25 x 12	2016035516
1 x 3/4	25 x 20	2016035517
1 1/2 x 1	40 x 25	2016035594
2 x 1 1/2	50 x 40	2016035518



**90° Street Elbow Mt x Soc**

Inch	MM	Product Code
1/2	12	2024035500
3/4	20	2024035501
1	25	2024035502
1 1/4	32	2024035503
1 1/2	40	2024035504
2	50	2024035505



**90° Street Elbow Mt x Ft**

Inch	MM	Product Code
1/2	12	2024035552
3/4	20	2024035553
1	25	2024035554
1 1/4	32	2024035555
1 1/2	40	2024035556
2	50	2024035557



**90° Street Elbow Spig x Soc**

Inch	MM	Product Code
1/2	12	2024035544
3/4	20	2024035545
1	25	2024035546
1 1/4	32	2024035547
1 1/2	40	2024035548
2	50	2024035549



**Side Outlet Elbow Soc x Soc x Soc**

Inch	MM	Product Code
1/2	12	2016035498



**Side Outlet Elbow Soc x Soc x Ft**

Inch	MM	Product Code
1/2	12	2016235033
3/4	20	2016235034
3/4 x 3/4 x 1/2	20 x 20 x 12	2016235035
1 x 1 x 1/2	25 x 25 x 12	2016235036



**45° Elbow Soc x Soc**

Inch	MM	Product Code
1/2	12	2007035481
3/4	20	2007035482
1	25	2007035483
1 1/4	32	2007035484
1 1/2	40	2007035485
2	50	2007035486
2 1/2	65	2007035487
3	75	2007035488
4	100	2007035489
5	125	2007035490
6	150	2007035491
8	200	2007035492
□ 10	250	2007035926
□ 12	300	2007035927
* 10	250	2006035493
* 12	300	2006035494
* 14	350	-
* 16	400	2006035495
* 18	450	-
* 20	500	2006035496
* 24	600	2006035497

**90° Radius Bends - 6 D Sp x Sp**

Inch	MM	Product Code
* 1/2	12	-
* 3/4	20	2021035396
* 1	25	2021035397
* 1 1/4	32	2021035398
* 1 1/2	40	2021035399
* 2	50	2021035400
* 3	75	2021035402
* 4	100	2021035403
* 6	150	2021035404
* 8	200	-
* 10	250	-
* 12	300	-

Solvent based cement must be used when joining socket fittings.

For consistent tight joints, basic principles of solvent cementing must be followed. For step-by-step procedures contact your local representative at (780) 449-1599.

CORROSION RESISTANT PRODUCTS & MANUFACTURING LTD.



## 22 1/2° Radius Bends - 6 D Sp x Sp

	Inch	MM	Product Code
*	10	250	-
*	12	300	-

## 45° Radius Bends - 6 D Sp x Sp

	Inch	MM	Product Code
*	1/2	12	-
*	3/4	20	2021035391
*	1	25	-
*	1 1/4	32	-
*	1 1/2	40	2021035392
*	2	50	2021035939
*	2 1/2	65	-
*	3	75	2021035393
*	4	100	2021035394
*	6	150	2021035395
*	8	200	-
*	10	250	-
*	12	300	-



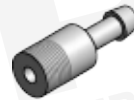
## Hose Adapter Insert x I.P.S. Soc

	Inch	MM	Product Code
	1/2	12	2038035596
	3/4	20	2038035597
	1	25	2038035598
	1 1/4	32	2038035599
	1 1/2	40	2038035600
	2	50	2038035601
	3	75	2038235037
	4	100	2038235038



## 22 1/2° Radius Bends - 6 D Sp x Sp

	Inch	MM	Product Code
*	1	25	2021035383
*	1 1/4	32	2021035384
*	1 1/2	40	2021035385
*	2	50	2021035386
*	2 1/2	65	2021035387
*	3	75	2021035388
*	4	100	2021035389
*	6	150	2021035390
*	8	200	-



## Hose Adapter (grey) Insert x Mt

	Inch	MM	Product Code
	1/2	12	2038035157
	3/4	20	2038035158
	1	25	2038035159
	1 1/4	32	2038035160
	1 1/2	40	2038035161
	2	50	2038035162
	2 1/2	65	2038035163
	3	75	2038035164
	4	100	2038035165

cont...



**Cross Soc x Soc x Soc x Soc**

Inch	MM	Product Code
1/2	12	2012035469
3/4	20	2012035470
1	25	2012035471
1 1/4	32	2012035472
1 1/2	40	2012035473
2	50	2012035474
2 1/2	65	2012035475
3	75	2012035476
4	100	2012035477
* 6	150	2012035478
* 8	200	-
* 10	250	-
* 12	300	-
* 14	350	-
* 16	400	-
* 18	450	-
* 20	500	-
* 24	600	-



**Reducing Cross Soc x Soc x Soc x Soc**

Inch	MM	Product Code
* 8 x 4	200 x 100	-
* 8 x 6	200 x 150	-
* 10 x 6	250 x 150	-
* 10 x 8	250 x 200	-
* 12 x 8	300 x 200	-
* 12 x 10	300 x 250	-

**Reducing Cross Soc x Soc x Soc x Soc**

Inch	MM	Product Code
* 14 x 10	350 x 250	-
* 14 x 12	350 x 300	-
* 16 x 12	400 x 300	-
* 16 x 14	400 x 350	-
* 18 x 14	450 x 350	-
* 18 x 16	450 x 400	-
* 20 x 16	500 x 400	-
* 20 x 18	500 x 450	-
* 24 x 18	600 x 450	-
* 24 x 20	600 x 500	-



**Coupling Ft x Ft**

Inch	MM	Product Code
1/2	12	2017035466
3/4	20	2017035467
1	25	2017035468



**Coupling Soc x Soc**

Inch	MM	Product Code
3/8	9	2017035447
1/2	12	2017035448
3/4	20	2017035449
1	25	2017035450
1 1/4	32	2017035451
1 1/2	40	2017035452
2	50	2017035453
2 1/2	65	2017035454
3	75	2017035455

cont...



## Coupling Soc x Soc

Inch	MM	Product Code
4	100	2017035456
5	125	2017035457
6	150	2017035458
8	200	2017035459
* 10	250	2017035460
* 12	300	2017035461
* 14	350	2017035462
* 16	400	2017035463
* 18	450	-
* 20	500	2017035464
* 24	600	2017035465



## Concentric Coupling Soc x Soc

Inch	MM	Product Code
* 8 x 3	200 x 75	2017035437
* 8 x 4	200 x 100	2017035438
* 8 x 6	200 x 150	2017035439
* 10 x 4	250 x 100	2017035440
* 10 x 6	250 x 150	2017035441
* 10 x 8	250 x 200	2017035442
* 12 x 4	300 x 100	-
* 12 x 6	300 x 150	2017035443
* 12 x 8	300 x 200	2017035444
* 12 x 10	300 x 250	-
* 14 x 6	350 x 150	-
* 14 x 8	350 x 200	2017035445
* 14 x 10	350 x 250	-
* 14 x 12	350 x 300	-
* 16 x 8	400 x 200	2017035446
* 16 x 10	400 x 250	-
* 16 x 12	400 x 300	-
* 16 x 14	400 x 350	-
* 18 x 8	450 x 200	-
* 18 x 10	450 x 250	-
* 18 x 12	450 x 300	-
* 18 x 14	450 x 350	-
* 18 x 16	450 x 400	-
* 20 x 12	500 x 300	-
* 20 x 14	500 x 350	-
* 20 x 16	500 x 400	-
* 20 x 18	500 x 450	-
* 24 x 14	600 x 350	-
* 24 x 16	600 x 400	2017035436
* 24 x 18	600 x 450	-
* 24 x 20	600 x 500	-



## Reducer Coupling Soc x Soc

Inch	MM	Product Code
3/4 x 1/2	20 x 12	2017035759
1 x 3/4	25 x 20	2017035760
1 1/4 x 1	32 x 25	2017035761
1 1/2 x 1 1/4	40 x 32	2017035762
2 x 1 1/2	50 x 40	2017035764
4 x 3	100 x 75	2017035765



**Eccentric Coupling Soc x Soc**

Inch	MM	Product Code
* 8 x 4	200 x 100	-
* 8 x 6	200 x 150	-
* 10 x 4	250 x 100	2017035479
* 10 x 6	250 x 150	-
* 10 x 8	250 x 200	-
* 12 x 4	300 x 100	-
* 12 x 6	300 x 150	2017035480
* 12 x 8	300 x 200	-
* 12 x 10	300 x 250	-
* 14 x 6	350 x 150	-
* 14 x 8	350 x 200	-
* 14 x 10	350 x 250	-
* 14 x 12	350 x 300	-
* 16 x 8	400 x 200	-
* 16 x 10	400 x 250	-
* 16 x 12	400 x 300	-
* 16 x 14	400 x 350	-
* 18 x 8	450 x 200	-
* 18 x 10	450 x 250	-
* 18 x 12	450 x 300	-
* 18 x 14	450 x 350	-
* 18 x 16	450 x 400	-
* 20 x 12	500 x 300	-
* 20 x 14	500 x 350	-
* 20 x 16	500 x 400	-
* 20 x 18	500 x 450	-
* 24 x 14	600 x 350	-
* 24 x 16	600 x 400	-
* 24 x 18	600 x 450	-
* 24 x 20	600 x 500	-

**Female Adapter Soc x Ft**

Inch	MM	Product Code
1/2	12	2038035559
3/4	20	2038035560
1	25	2038035561
1 1/4	32	2038035562
1 1/2	40	2038035563
2	50	2038035564
2 1/2	65	2038035565
3	75	2038035566
4	100	2038035567
5	125	2038035568
6	150	2038035569
8	200	2038035570



**Female Adapter Reducing Soc x Ft**

Inch	MM	Product Code
1/2 x 1/4	12 x 6	2038035571
1/2 x 3/8	12 x 9	2038035951
1/2 x 3/4	12 x 20	2038035572
3/4 x 1/2	20 x 12	2038035992
3/4 x 1	20 x 25	2038035990
1 x 3/4	25 x 20	2038035958



**Male Adapter Soc x Mt**

Inch	MM	Product Code
3/8	9	2038035934
1/2	12	2038035602
3/4	20	2038035603
1	25	2038035604
1 1/4	32	2038035605
1 1/2	40	2038035606
2	50	2038035607
2 1/2	65	2038035608
3	75	2038035609
4	100	2038035610
5	125	2038035611
6	150	2038035612
8	200	2038035613

**Male Adapter Reducing Mt x Soc**

Inch	MM	Product Code
1/2 x 3/4	12 x 20	2038035614
3/4 x 1/2	20 x 12	2038035615
3/4 x 1	20 x 25	2038035616
1 x 3/4	25 x 20	2038035617
1 x 1 1/4	25 x 32	2038035618
1 1/4 x 1	32 x 25	2038035380
1 1/4 x 1 1/2	32 x 40	2038035593
1 1/2 x 1 1/4	40 x 32	2038035619
1 1/2 x 2	40 x 50	2038035620
2 x 1 1/2	50 x 40	2038035973
2 x 2 1/2	50 x 65	2038235041
2 1/2 x 3	65 x 75	2038235042
3 x 4	75 x 100	2038235044



**IPS TO PIP Adapter Spig x Soc**

Inch	MM	Product Code
6	150	2038235045

**Riser Extension Ft x Mt**

Inch	MM	Product Code
1/2	12	2038035591
3/4	20	2038035944
1	25	2038035947



**Spigot x Female Adapter Spig x Ft**

Inch	MM	Product Code
1/2	12	2038035578
3/4	20	2038035579
1	25	2038035580
1 1/4	32	2038035581
1 1/2	40	2038035582
2	50	2038035583
2 1/2	65	2038035584
3	75	2038035585
4	100	2038035586



**Reducer Bushing Spig x Soc**

Inch	MM	Product Code
1/2 x 1/4	12 x 6	2061035643
1/2 x 3/8	20 x 9	2061035644
3/4 x 1/2	20 x 12	2061035646
1 x 1/2	25 x 12	2061035648
1 x 3/4	25 x 20	2061035649
1 1/4 x 1/2	32 x 12	2061035650
1 1/4 x 3/4	32 x 20	2061035651
1 1/4 x 1	32 x 25	2061035652
1 1/2 x 1/2	40 x 12	2061035653
1 1/2 x 3/4	40 x 20	2061035654
1 1/2 x 1	40 x 25	2061035655
1 1/2 x 1 1/4	40 x 32	2061035656
2 x 1/2	50 x 12	2061035657
2 x 3/4	50 x 20	2061035658
2 x 1	50 x 25	2061035659

cont...

**Reducer Bushing Spig x Soc**

Inch	MM	Product Code
2 x 1 1/4	50 x 32	2061035660
2 x 1 1/2	50 x 40	2061035661
2 1/2 x 1 1/2	65 x 12	2061035662
2 1/2 x 3/4	65 x 20	2061035663
2 1/2 x 1	65 x 25	2061035664
2 1/2 x 1 1/4	65 x 32	2061035665
2 1/2 x 1 1/2	65 x 40	2061035666
2 1/2 x 2	65 x 50	2061035667
3 x 3/4	75 x 20	2061035668
3 x 1	75 x 25	2061035669
3 x 1 1/4	75 x 32	2061035670
3 x 1 1/2	75 x 40	2061035671
3 x 2	75 x 50	2061035672
3 x 2 1/2	75 x 65	2061035673
4 x 2	100 x 50	2061035677
4 x 2 1/2	100 x 65	2061035678
4 x 3	100 x 75	2061035679
5 x 2	125 x 50	2061035680
5 x 3	125 x 75	2061035681
5 x 4	125 x 100	2061035682
6 x 2	150 x 50	2061035683
6 x 3	150 x 75	2061035684
6 x 4	150 x 100	2061035685
6 x 5	150 x 125	2061035686
8 x 4	200 x 100	2061035687
8 x 6	200 x 150	2061035688
* 10 x 4	250 x 100	2061035689
* 10 x 6	250 x 150	2061035690
* 10 x 8	250 x 200	2061035691
* 12 x 4	300 x 100	2061035041
* 12 x 6	300 x 150	2061035692
* 12 x 8	300 x 200	2061035693
* 12 x 10	300 x 250	2061035694
* 14 x 6	350 x 150	-
* 14 x 8	350 x 200	-
* 14 x 10	350 x 250	-
* 14 x 12	350 x 300	2061035695
* 16 x 8	400 x 200	-
* 16 x 10	400 x 250	-
* 16 x 12	400 x 300	-
* 16 x 14	400 x 350	-
* 18 x 10	450 x 250	-

cont...

## Reducer Bushing Spig x Soc

Inch	MM	Product Code
* 18 x 12	450 x 300	-
* 18 x 14	450 x 350	-
* 18 x 16	450 x 400	-
* 20 x 12	500 x 300	-
* 20 x 14	500 x 350	-
* 20 x 16	500 x 400	-
* 20 x 18	500 x 450	-
* 24 x 14	600 x 350	-
* 24 x 16	600 x 400	-
* 24 x 18	600 x 450	-
* 24 x 20	600 x 500	-



## Reducer Bushing Spig x Ft

Inch	MM	Product Code
1/2 x 1/8	12 x 3	2061035717
1/2 x 1/4	12 x 6	2061035718
1/2 x 3/8	12 x 9	2061035719
3/4 x 1/4	20 x 6	2061035720
3/4 x 1/2	20 x 12	2061035722
1 x 3/8	25 x 9	2061035723
1 x 1/2	25 x 12	2061035724
1 x 3/4	25 x 20	2061035725
1 1/4 x 1/2	32 x 12	2061035726
1 1/4 x 3/4	32 x 20	2061035727
1 1/4 x 1	32 x 25	2061035728
1 1/2 x 1/2	40 x 12	2061035729
1 1/2 x 3/4	40 x 20	2061035730
1 1/2 x 1	40 x 25	2061035731
1 1/2 x 1 1/4	40 x 32	2061035732
2 x 1/2	50 x 12	2061035733
2 x 3/4	50 x 20	2061035734
2 x 1	50 x 25	2061035735
2 x 1 1/4	50 x 32	2061035736
2 x 1 1/2	50 x 40	2061035737
2 1/2 x 1/2	65 x 12	2061035738

cont...

## Reducer Bushing Spig x Ft

Inch	MM	Product Code
2 1/2 x 3/4	65 x 20	2061035739
2 1/2 x 1	65 x 25	2061035740
2 1/2 x 1 1/4	65 x 32	2061035741
2 1/2 x 1 1/2	65 x 40	2061035742
2 1/2 x 2	65 x 50	2061035743
3 x 3/4	75 x 20	2061035744
3 x 1	75 x 25	2061035745
3 x 1 1/4	75 x 32	2061035746
3 x 1 1/2	75 x 40	2061035747
3 x 2	75 x 50	2061035748
3 x 2 1/2	75 x 65	2061035749
4 x 2	100 x 50	2061035750
4 x 2 1/2	100 x 65	2061035751
4 x 3	100 x 75	2061035752
5 x 3	125 x 75	2061035753
5 x 4	125 x 100	2061035754
6 x 2	150 x 50	2061035755
6 x 3	150 x 75	2061035756
6 x 4	150 x 100	2061035757
6 x 5	150 x 125	2061035758



## T.T. Bushing Mt x Ft

Inch	MM	Product Code
3/8 x 1/4	9 x 6	2061035696
1/2 x 1/4	12 x 6	2061035697
1/2 x 3/8	12 x 9	2061035698
3/4 x 1/4	20 x 6	2061035699
3/4 x 3/8	20 x 9	2061035968
3/4 x 1/2	20 x 12	2061035700
1 x 1/2	25 x 12	2061035701
1 x 3/4	25 x 20	2061035702
1 1/4 x 1/2	32 x 12	2061035703
1 1/4 x 3/4	32 x 20	2061035704
1 1/4 x 1	32 x 25	2061035705
1 1/2 x 1/2	40 x 12	2061035706

cont...

T.T. Bushing Mt x Ft

Inch	MM	Product Code
1 1/2 x 3/4	40 x 20	2061035707
1 1/2 x 1	40 x 25	2061035708
1 1/2 x 1 1/4	40 x 32	2061035709
2 x 1	50 x 25	2061035711
2 x 1 1/4	50 x 32	2061035712
2 x 1 1/2	50 x 40	2061035713
2 1/2 x 2	65 x 50	2061035714
3 x 2	75 x 50	2061035715
3 x 2 1/2	75 x 65	2061035716



Cap Soc

Inch	MM	Product Code
3/8	9	2142035406
1/2	12	2142035407
3/4	20	2142035408
1	25	2142035409
1 1/4	32	2142035410
1 1/2	40	2142035411
2	50	2142035412
2 1/2	65	2142035413
3	75	2142035414
4	100	2142035415
5	125	2142035416
6	150	2142035417
8	200	2142035418
* 10	250	2141035419
* 12	300	2141035420
* 14	350	2141035421
* 16	400	-
* 18	450	2141035422
* 20	500	2141035940
* 24	600	-

Cap Ft

Inch	MM	Product Code
3/8	9	2142035948
1/2	12	2142035423
3/4	20	2142035424
1	25	2142035425
1 1/4	32	2142035426
1 1/2	40	2142035427
2	50	2142035428
2 1/2	65	2142035429
3	75	2142035430
4	100	2142035431
5	125	2142035432
6	150	2142035433



Plug Spig

Inch	MM	Product Code
3/8	9	2140035946
1/2	12	2140035631
3/4	20	2140035632
1	25	2140035633
1 1/4	32	2140035634
1 1/2	40	2140035635
2	50	2140035636
2 1/2	65	2140035637
3	75	2140035638
4	100	2140035639

# PVC SCHEDULE 40



## Plug Mt

Inch	MM	Product Code
3/8	9	2140035621
1/2	12	2140035622
3/4	20	2140035623
1	25	2140035624
1 1/4	32	2140035625
1 1/2	40	2140035626
2	50	2140035627
2 1/2	65	2140035628
3	75	2140035629
4	100	2140035630
6	150	2140235047



## Union Ft x Ft Buna O-Ring Seal

Inch	MM	Product Code
1/2	12	2019035906
3/4	20	2019035907
1	25	2019035908
1 1/4	32	2019035909
1 1/2	40	2019035910
2	50	2019035911



## Wye Soc x Soc x Soc

Inch	MM	Product Code
□ 1 1/2	40	2008035912
□ 2	50	2008035913
□ 3	75	2008035915
□ 4	100	2008035916
□ 6	150	2008035917
□ 6 x 6 x 4	150 x 150 x 100	2008035922

1/2" - 2" 235 PSI maximum internal pressure @ 23°C (73°F)  
 3" or Larger 150 PSI maximum internal pressure @ 23°C (73°F)

## Union Soc x Soc Buna O-Ring Seal

Inch	MM	Product Code
1/2	12	2019035900
3/4	20	2019035901
1	25	2019035902
1 1/4	32	2019035903
1 1/2	40	2019035904
2	50	2019035905

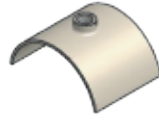
**Soc**  
**Spig**  
**Ft**  
**Mt**

Solvent Weld Socket  
 Spigot or plain end  
 Female iron pipe thread  
 Male iron pipe thread

\*

□

Fabricated fittings  
 Molded fittings: 150 PSI max.  
 working pressure, non-shock @ 23°C (73°F)



**Saddles Pipe O.D. x Soc (Rated for 80 PSI Open-Ended)**

Inch	MM	Product Code
2 1/2 x 3/4	65 x 20	2124235048
✦ 3 x 1 1/4	75 x 32	2124035996
3 x 1 1/2	75 x 40	2124235049
✦ 3 x 2	75 x 50	2124035995
✦ 4 x 1 1/4	100 x 32	2124035767
4 x 1 1/2	100 x 40	2124035768
✦ 4 x 2	100 x 50	2124035769
✦ 6 x 1 1/4	150 x 32	2124235051
6 x 1 1/2	150 x 40	2124035588
✦ 6 x 2	150 x 50	2124035942
6 x 4	150 x 100	2124035770
✦ 8 x 1 1/4	200 x 32	2124235052
8 x 1 1/2	200 x 40	2124235053
✦ 8 x 2	200 x 50	2124235054
8 x 4	200 x 100	2124035976
10 x 4	250 x 100	2124035771

✦ These sizes bushed

**Saddles Pipe O.D. x Ft (Rated for 80 PSI Open-Ended)**

Inch	MM	Product Code
3 x 1 1/2	75 x 40	2124035993
4 x 1 1/2	100 x 40	2124035772
5 x 2	125 x 50	2124035943
6 x 1 1/2	150 x 40	2124035587
8 x 4	200 x 100	2124035774
10 x 4	250 x 100	2124235058

**NOTE:**

When assembling saddles to PVC Pipe, Xirtec 19 cement or equivalent is recommended. Although good connections may be accomplished without Saddle Straps, it is recommended that a clamp or strap device is used during assembly to insure good compression between the pipe and fitting surfaces as the solvent cures.

CRP  
CORROSION RESISTANT PIPING  
PRODUCTS & MANUFACTURING LTD.