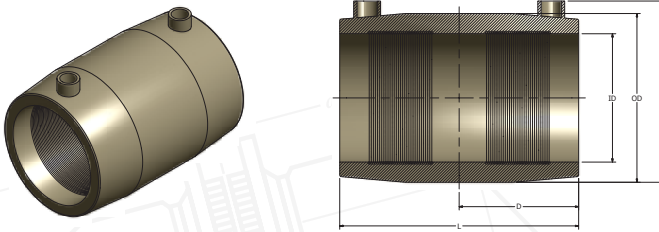


# ELECTROFUSION COUPLING



Nominal Size	Inside Dia. (Nominal) I.D.	Outside Dia. (Nominal) O.D.	Stub Depth (Nominal) "D"	Overall Height (Nominal) "H"	Overall Length (Nominal) "L"	Product Code
1/2" IPS	0.844	1.380	1.420	2.150	2.980	10450050**
1" IPS	1.326	1.880	1.570	2.560	3.300	10450100**
1 1/4" IPS	1.683	2.270	1.820	3.000	3.700	10450125**
1 1/2" IPS	1.912	2.600	1.890	3.270	3.900	10450150**
2" IPS	2.408	3.160	2.090	3.820	4.310	10450200**
3" IPS	3.553	4.540	2.720	5.180	5.590	10450300**
4" IPS	4.528	5.570	3.000	6.510	6.140	10450400**
5" IPS	5.536	6.930	3.540	7.560	7.170	10450500**
6" IPS	6.661	8.170	4.100	8.700	8.350	10450600**
7" IPS	7.125	8.740	4.094	8.937	7.189	10450700**
8" IPS	8.685	10.630	4.700	11.200	9.480	10450800**
10" IPS	10.784	13.250	5.000	13.410	10.500	10451000**
12" IPS	12.768	15.700	5.500	15.840	11.500	10451200**

\*\*\* Industrial non-compliant astm fittings

\*\*\* Fittings also available in larger sizes up to 24"

\*\*\* Fittings available in metric