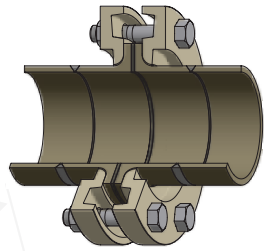
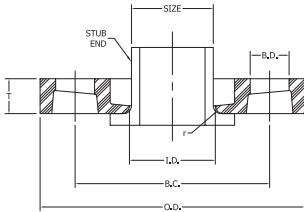
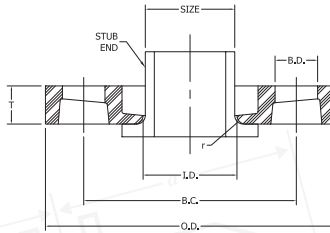


# DUCTILE IRON - CONVOLUTED FLANGE/BACK UP RING



Pipe Diameter	Outside Diameter O.D.	Flange Thickness T	Inside Dia. I.D.	Bolt Count N	Dia. Bolt Hole B.D.	Bolt Circle B.D.	Radius R	Weight Lbs/Pc	Operating Pressure	Product Code
1/2"	3.50	0.50	0.90	4	0.63	2.38	0.13	1.00	267	8002005007
3/4"	3.88	0.50	1.11	4	0.63	2.75	0.13	1.00	267	8002007507
1"	4.25	0.56	1.38	4	0.63	3.13	0.13	1.00	267	8002010007
1 1/4"	4.63	0.63	1.72	4	0.63	3.50	0.19	2.00	267	8002012507
1 1/2"	5.00	0.69	1.97	4	0.63	3.88	0.25	2.00	267	8002015007
2"	6.00	0.75	2.46	4	0.75	4.75	0.31	3.00	267	8002020007
2"	6.00	0.50	2.63	4	0.75	4.75	0.20	1.50	160	8002020011
2 1/2"	7.00	0.88	2.97	4	0.75	5.50	0.31	4.00	267	8002025007
3"	7.50	0.94	3.60	4	0.75	6.00	0.40	4.00	267	8002030007
3"	7.50	0.53	3.75	4	0.75	6.00	0.28	2.50	160	8002030011
4"	9.00	0.94	4.60	8	0.75	7.50	0.40	5.50	267	8002040007
4"	9.00	0.55	4.75	8	0.75	7.50	0.28	3.50	160	8002040011
5"	10.00	0.94	5.69	8	0.88	8.50	0.44	6.00	267	8002050007
6"	11.00	1.00	6.75	8	0.88	9.50	0.40	7.00	267	8002060007
6"	11.00	0.63	6.88	8	0.88	9.50	0.28	4.50	160	8002060011
8"	13.50	1.12	8.75	8	0.88	11.75	0.40	11.00	267	8002080007
8"	13.50	0.85	8.88	8	0.88	11.75	0.28	8.00	160	8002080011
10"	16.00	1.19	10.92	12	1.00	14.25	0.40	16.00	267	8002100007
10"	16.00	0.98	11.00	12	1.00	14.25	0.31	12.00	160	8002100011
12"	19.00	1.50	12.92	12	1.00	17.00	0.40	23.00	267	8002120007
12"	19.00	1.25	13.13	12	1.00	17.00	0.28	20.00	160	8002120011
14"	21.00	1.63	14.18	12	1.13	18.75	0.40	37.00	267	8002140007
14"	21.00	1.38	14.38	12	1.13	18.75	0.31	30.00	160	8002140011
16"	23.50	1.88	16.19	16	1.13	21.25	0.40	49.00	267	8002160007
16"	23.50	1.65	16.38	16	1.13	21.25	0.35	40.00	160	8002160011
18"	25.00	1.80	18.20	16	1.25	22.75	0.40	48.00	267	8002180007
18"	25.00	1.67	18.38	16	1.25	22.75	0.35	45.00	160	8002180011
20"	27.50	2.06	20.38	20	1.25	25.00	0.31	61.00	200	8002200009
20"	27.50	1.81	20.38	20	1.25	25.00	0.40	55.00	160	8002200011
22"	29.50	2.13	22.38	20	1.38	27.25	0.31	72.00	200	8002220009
22"	29.50	2.00	22.38	20	1.38	27.25	0.37	65.00	160	8002220011

# DUCTILE IRON - CONVOLUTED FLANGE/BACK UP RING



Pipe Diameter	Outside Diameter O.D.	Flange Thickness T	Inside Dia. I.D.	Bolt Count N	Dia. Bolt Hole B.D.	Bolt Circle B.D.	Radius R	Weight Lbs/Pc	Operating Pressure	Product Code
24"	32.00	2.13	24.38	20	1.38	29.50	0.31	91.00	200	8002240009
24"	32.00	2.17	24.38	20	1.38	29.50	0.40	80.00	160	8002240011
26"	34.25	2.53	26.38	24	1.38	31.75	0.31	109.00	250	8002260007
26"	34.25	2.38	26.38	24	1.38	31.75	0.31	104.00	160	8002260011
28"	36.50	2.50	28.38	28	1.38	34.00	0.31	116.00	116	8002280011
30"	38.75	2.68	30.38	28	1.38	36.00	0.31	153.00	200	8002300009
32"	41.75	2.84	32.38	28	1.63	38.50	0.31	175.00	190	8002320009
34"	43.75	2.93	34.38	32	1.63	40.50	0.31	191.00	160	8002340011
36"	46.00	3.14	36.38	32	1.63	42.75	0.31	225.00	160	8002360011
40"	50.75	3.50	39.75	36	1.63	42.75	0.31	307.00	128	8002400013
42"	53.00	3.53	42.38	36	1.63	49.50	0.31	319.00	128	8002420013
48"	59.50	3.82	48.50	44	1.63	56.00	0.25	400.00	100	8002480017

**CRP**  
CORROSION RESISTANT PIPING  
PRODUCTS & MANUFACTURING LTD.