

CPVC SCHEDULE 80

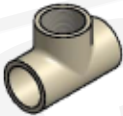


Tee Soc x Soc x Soc

Inch	MM	Product Code
1/4	6	3115059479
3/8	9	3115059480
1/2	12	3115059481
3/4	20	3115059482
1	25	3115059483
1 1/4	32	3115059484
1 1/2	40	3115059485
2	50	3115059486
2 1/2	65	3115059487
3	75	3115059488
4	100	3115059489
6	150	3115059490
8	200	3115059491
□ 10	250	3115059062
□ 12	300	3115059084

Tee Ft x Ft x Ft

Inch	MM	Product Code
1/4	6	3115059507
3/8	9	3115059508
1/2	12	3115059509
3/4	20	3115059510
1	25	3115059511
1 1/4	32	3115059512
1 1/2	40	3115059513
2	50	3115059514
2 1/2	65	3115059515
3	75	3115059516
4	100	3115059517



Tee Soc x Soc x Ft

Inch	MM	Product Code
1/2	12	3115059942
3/4	20	3115059943
1	25	3115059518

Reducing Tee Soc x Soc x Soc

Inch	MM	Product Code
3/4 x 3/4 x 1/2	20 x 20 x 12	3118059492
1 x 1 x 1/2	25 x 25 x 12	3118059493
1 x 1 x 3/4	25 x 25 x 20	3118059494
1 1/4 x 1 x 1 1/4	32 x 32 x 25	3118059495
1 1/2 x 1 1/2 x 3/4	40 x 40 x 20	3118059496
1 1/2 x 1 1/2 x 1	40 x 40 x 25	3118059497
2 x 2 x 1/2	50 x 50 x 12	3118059498
2 x 2 x 3/4	50 x 50 x 20	3118059499
2 x 2 x 1	50 x 50 x 25	3118059500
2 x 2 x 1 1/2	50 x 50 x 40	3118059501
3 x 3 x 2	75 x 75 x 50	3118059502
4 x 4 x 2	100 x 100 x 50	3118059504
4 x 4 x 3	100 x 100 x 75	3118059505

cont...

Reducing Tee Soc x Soc x Soc

Inch	MM	Product Code
6 x 6 x 4	150 x 150 x 100	3118059506
8 x 8 x 6	200 x 200 x 150	3118059567



90° Elbow Soc x Soc

Inch	MM	Product Code
1/4	6	3016059192
3/8	9	3016059193
1/2	12	3016059194
3/4	20	3016059195
1	25	3016059196
1 1/4	32	3016059197
1 1/2	40	3016059198
2	50	3016059199
2 1/2	65	3016059200
3	75	3016059201
4	100	3016059202
6	150	3016059203
8	200	3016059204
□ 10	250	3016059085
□ 12	300	3016059086

90° Elbow Ft x Ft

Inch	MM	Product Code
1/4	6	3016059206
3/8	9	3016059207
1/2	12	3016059208
3/4	20	3016059209
1	25	3016059210
1 1/4	32	3016059211
1 1/2	40	3016059212
2	50	3016059213
2 1/2	65	3016059214
3	75	3016059215
4	100	3016059216



90° Elbow Soc x Ft

Inch	MM	Product Code
1/2	12	3016059187
3/4	20	3016059941
1	25	3016059188
1 1/4	32	3016059189
1 1/2	40	3016059190
2	50	3016059191



45° Elbow Soc x Soc

Inch	MM	Product Code
1/4	6	3007059162
3/8	9	3007059163
1/2	12	3007059164
3/4	20	3007059165
1	25	3007059166
1 1/4	32	3007059167
1 1/2	40	3007059168
2	50	3007059169
2 1/2	65	3007059170
3	75	3007059171
4	100	3007059172
6	150	3007059173
8	200	3007059174
□ 10	250	3007059087
□ 12	300	3007059088

45° Elbow Ft x Ft

Inch	MM	Product Code
1/4	6	3007059176
3/8	9	3007059177
1/2	12	3007059178
3/4	20	3007059179
1	25	3007059180
1 1/4	32	3007059181
1 1/2	40	3007059182
2	50	3007059183
2 1/2	65	3007059184
3	75	3007059185
4	100	3007059186



30° Elbow Soc x Soc

Inch	MM	Product Code
6	150	3007059022



22 1/2° Elbow Soc x Soc

Inch	MM	Product Code
2	50	3151059614
3	75	3151059615
4	100	3151059616



Cross Soc x Soc x Soc x Soc

Inch	MM	Product Code
1/4	6	3012059620
1/2	12	3012059154
3/4	20	3012059155
1	25	3012059156
1 1/4	32	3012059157
1 1/2	40	3012059158
2	50	3012059159
2 1/2	65	3012059018
3	75	3012059160
4	100	3012059161



11 1/4° Elbow Soc x Soc

Inch	MM	Product Code
2	50	3007059617
3	75	3007059618
4	100	3007059619

Solvent based cement must be used when joining socket fittings.

For consistent tight joints, basic principles of solvent cementing must be followed. For step-by-step procedures contact your local representative at (780) 449-1599.

CRP
CORROSION RESISTANT PIPING
PRODUCTS & MANUFACTURING LTD.



Coupling Soc x Soc

Inch	MM	Product Code
1/4	6	3017059130
3/8	9	3017059131
1/2	12	3017059132
3/4	20	3017059133
1	25	3017059134
1 1/4	32	3017059135
1 1/2	40	3017059136
2	50	3017059137
2 1/2	65	3017059138
3	75	3017059139
4	100	3017059140
6	150	3017059141
8	200	3017059142
*	10	3017059033
*	12	3017059043

Reducer Coupling Soc x Soc

Inch	MM	Product Code
3/4 x 1/2	20 x 12	3017059460
1 x 1/2	25 x 12	3017059461
1 x 3/4	25 x 20	3017059462
1 1/4 x 1	32 x 25	3017059463
1 1/2 x 3/4	40 x 20	3017059464
1 1/2 x 1	40 x 25	3017059465
1 1/2 x 1 1/4	40 x 32	3017059466
2 x 1	50 x 25	3017059467
2 x 1 1/2	50 x 40	3017059458
3 x 2	75 x 50	3017059470
4 x 2	100 x 50	3017059459
4 x 3	100 x 75	3017059472
6 x 4	150 x 100	3017059471
8 x 6	200 x 150	3017059473



Coupling Ft x Ft

Inch	MM	Product Code
1/4	6	3017059143
3/8	9	3017059144
1/2	12	3017059145
3/4	20	3017059146
1	25	3017059147
1 1/4	32	3017059148
1 1/2	40	3017059149
2	50	3017059150
2 1/2	65	3017059151
3	75	3017059152
4	100	3017059153



Reducer Bushing Spig x Soc

Inch	MM	Product Code
1/2 x 1/4	12 x 6	3061059373
1/2 x 3/8	12 x 9	3061059374
3/4 x 1/2	20 x 12	3061059375
1 x 1/2	25 x 12	3061059376
1 x 3/4	25 x 20	3061059377
1 1/4 x 1/2	32 x 12	3061059378
1 1/4 x 3/4	32 x 20	3061059379
1 1/4 x 1	32 x 25	3061059380
1 1/2 x 1/2	40 x 12	3061059381
1 1/2 x 3/4	40 x 20	3061059382
1 1/2 x 1	40 x 25	3061059383
1 1/2 x 1 1/4	40 x 32	3061059384
2 x 1/2	50 x 12	3061059385
2 x 3/4	50 x 20	3061059386
2 x 1	50 x 25	3061059387
2 x 1 1/4	50 x 32	3061059388
2 x 1 1/2	50 x 40	3061059389
2 1/2 x 2	65 x 50	3061059392
3 x 1 1/2	75 x 40	3061059393
3 x 2	75 x 50	3061059394
3 x 2 1/2	75 x 65	3061059395
4 x 2	100 x 50	3061059396
4 x 3	100 x 75	3061059397
6 x 2	150 x 50	3061059398
6 x 3	150 x 75	3061059399
6 x 4	150 x 100	3061059400
8 x 6	200 x 150	3061059401

Reducer Bushing Spig x Ft

Inch	MM	Product Code
1/2 x 1/4	12 x 6	3061059428
1/2 x 3/8	12 x 9	3061059429
3/4 x 1/4	20 x 6	3061059430
3/4 x 1/2	20 x 12	3061059431
1 x 1/2	25 x 12	3061059432
1 x 3/4	25 x 20	3061059433
1 1/4 x 1/2	32 x 12	3061059434
1 1/4 x 3/4	32 x 20	3061059435
1 1/4 x 1	32 x 25	3061059436
1 1/2 x 1/2	40 x 12	3061059437
1 1/2 x 3/4	40 x 20	3061059438
1 1/2 x 1	40 x 25	3061059439
1 1/2 x 1 1/4	40 x 32	3061059440
2 x 1/2	50 x 12	3061059441
2 x 3/4	50 x 20	3061059442
2 x 1	50 x 25	3061059443
2 x 1 1/4	50 x 32	3061059444
2 x 1 1/2	50 x 40	3061059445
2 1/2 x 3/4	65 x 20	3061059446
2 1/2 x 1	65 x 25	3061059447
2 1/2 x 1 1/4	65 x 32	3061059448
2 1/2 x 1 1/2	65 x 40	3061059449
2 1/2 x 2	65 x 50	3061059450
3 x 1	75 x 25	3061059451
3 x 1 1/2	75 x 40	3061059452
3 x 2	75 x 50	3061059453
3 x 2 1/2	75 x 65	3061059454
4 x 2	100 x 50	3061059455
4 x 2 1/2	100 x 65	3061059456
4 x 3	100 x 75	3061059457
6 x 3	150 x 75	3061059458
6 x 4	150 x 100	3061059459

CPVC SCHEDULE 80



TT Bushing Mt x Ft

Inch	MM	Product Code
3/8 x 1/4	9 x 6	3061059402
1/2 x 1/4	12 x 6	3061059403
1/2 x 3/8	12 x 9	3061059404
3/4 x 1/4	20 x 6	3061059405
3/4 x 3/8	20 x 9	3061059406
3/4 x 1/2	20 x 12	3061059407
1 x 1/4	25 x 6	3061059643
1 x 1/2	25 x 12	3061059408
1 x 3/4	25 x 20	3061059409
1 1/4 x 1/2	32 x 12	3061059410
1 1/4 x 3/4	32 x 20	3061059411
1 1/4 x 1	32 x 25	3061059412
1 1/2 x 1/2	40 x 12	3061059413
1 1/2 x 3/4	40 x 20	3061059414
1 1/2 x 1	40 x 25	3061059415
1 1/2 x 1 1/4	40 x 32	3061059416
2 x 1/2	50 x 12	3061059417
2 x 3/4	50 x 20	3061059418
2 x 1	50 x 25	3061059419
2 x 1 1/4	50 x 32	3061059420
2 x 1 1/2	50 x 40	3061059421
2 1/2 x 2	65 x 50	3061059422
3 x 1 1/2	75 x 40	3061059423
3 x 2	75 x 50	3061059424
3 x 2 1/2	75 x 65	3061059425
4 x 2	100 x 50	3061059426
4 x 3	100 x 75	3061059427

Male Adapter Soc x Mt

Inch	MM	Product Code
1/2	12	3038059286
3/4	20	3038059287
1	25	3038059288
1 1/4	32	3038059289
1 1/2	40	3038059290
2	50	3038059291
2 1/2	65	3038059292
3	75	3038059293
4	100	3038059294



Female Adapter Soc x Ft

Inch	MM	Product Code
1/4	6	3038059217
3/8	9	3038059218
1/2	12	3038059219
3/4	20	3038059220
1	25	3038059221
1 1/4	32	3038059222
1 1/2	40	3038059223
2	50	3038059224
2 1/2	65	3038059225
3	75	3038059226
4	100	3038059227

Female Adapter Spig x Ft SS Reinforced

Inch	MM	Product Code
1/2	12	3038059945
3/4	20	3038059946
1	25	3038059947
1 1/4	32	3038059948
1 1/2	40	3038059949
2	50	3038059950
3	75	3038059647
4	100	3038059648



Female Adapter Soc x Ft SS Reinforced

Inch	MM	Product Code
1/2	12	3038059951
3/4	20	3038059952
1	25	3038059953
1 1/4	32	3038059954
1 1/2	40	3038059955
2	50	3038059956
3	75	3038059957
4	100	3038059958

CPVC SCHEDULE 80



Cap Soc

Inch	MM	Product Code
1/4	6	3142059107
3/8	9	3142059108
1/2	12	3142059109
3/4	20	3142059110
1	25	3142059111
1 1/4	32	3142059112
1 1/2	40	3142059113
2	50	3142059114
2 1/2	65	3142059115
3	75	3142059116
4	100	3142059117
6	150	3142059118
8	200	3142059029

Plug Mt

Inch	MM	Product Code
1/4	6	3140059361
3/8	9	3140059362
1/2	12	3140059363
3/4	20	3140059364
1	25	3140059365
1 1/4	32	3140059366
1 1/2	40	3140059367
2	50	3140059368
2 1/2	65	3140059369
3	75	3140059370
4	100	3140059371



Cap Ft

Inch	MM	Product Code
1/4	6	3142059119
3/8	9	3142059120
1/2	12	3142059121
3/4	20	3142059122
1	25	3142059123
1 1/4	32	3142059124
1 1/2	40	3142059125
2	50	3142059126
2 1/2	65	3142059127
3	75	3142059128
4	100	3142059129

Union Soc x Soc Viton® O-Ring Seal

Inch	MM	Product Code
1/4	6	3019059519
1/2	12	3019059520
3/4	20	3019059521
1	25	3019059522
1 1/4	32	3019059523
1 1/2	40	3019059524
2	50	3019059525
3	75	3019059526
4	100	3019059550



Union Ft x Ft Viton® O-Ring Seal

Inch	MM	Product Code
1/4	6	3019059527
1/2	12	3019059529
3/4	20	3019059530
1	25	3019059531
1 1/4	32	3019059532
1 1/2	40	3019059533
2	50	3019059534
3	75	3019059535
4	100	3019059651

Wye Soc x Soc x Soc

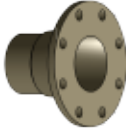
Inch	MM	Product Code
□ 1 1/2	40	3008059553
□ 2	50	3008059536
□ 3	75	3008059537
□ 4	100	3008059538
□ 6	150	3008059539
□ 6 x 6 x 4	150 x 150 x 100	3008059541

1/2" - 2" 235 PSI maximum internal pressure @ 23° C (73° F)
 3" or Larger 150 PSI maximum internal pressure @ 23° C (73° F)



CPVC Tank Adapter Soc x Ft

Inch	MM	Product Code
1/2	12	3037059100
3/4	20	3037059101
1	25	3037059102
1 1/2	40	3037059103
2	50	3037059104
3	75	3037059105
4	100	3037059106



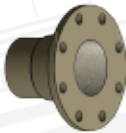
Flange Soc Solid Style

Inch	MM	Product Code
1/2	12	3039059228
3/4	20	3039059229
1	25	3039059230
1 1/4	32	3039059231
1 1/2	40	3039059232
2	50	3039059233
2 1/2	65	3039059234
3	75	3039059235
4	100	3039059236
6	150	3039059238
8	200	3039059239



Heavy Duty Flange Soc Vanstone Style

Inch	MM	Product Code
1/2	12	3039059262
3/4	20	3039059263
1	25	3039059264
1 1/4	32	3039059265
1 1/2	40	3039059266
2	50	3039059267
2 1/2	65	3039059268
3	75	3039059269
4	100	3039059270
6	150	3039059271
8	200	3039059272
10	250	3039059273
12	300	3039059569



Flange Ft Solid Style

Inch	MM	Product Code
1/2	12	3039059240
3/4	20	3039059241
1	25	3039059242
1 1/4	32	3039059243
1 1/2	40	3039059244
2	50	3039059245
2 1/2	65	3039059246
3	75	3039059247
4	100	3039059248
6	150	3039059249

All molded flanges are rated at 150 PSI @ 23° C (73° F), non-shock. Standard 150 lb bolting pattern.

CAUTION: When thermoplastic flanges are used with butterfly valves or other equipment, where a full faced continuous support does not exist, a back-up ring or fiber-glass reinforcement should be used to prevent cracking of the flange face.

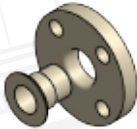


Flange Ft Vanstone Style

Inch	MM	Product Code
1/2	12	3039059656
3/4	20	3039059657
1	25	3039059658
1 1/4	32	3039059284
1 1/2	40	3039059659
2	50	3039059660
2 1/2	65	3039059661
3	75	3039059285
4	100	3039059662

Flange Blind

Inch	MM	Product Code
1/2	12	3003059250
3/4	20	3003059251
1	25	3003059252
1 1/4	32	3003059253
1 1/2	40	3003059254
2	50	3003059255
2 1/2	65	3003059256
3	75	3003059257
4	100	3003059258
6	150	3003059259
8	200	3003059260



Flange Spigot Vanstone Style

Inch	MM	Product Code
1/2	12	3039059274
3/4	20	3039059275
1	25	3039059276
1 1/4	32	3039059277
1 1/2	40	3039059278
2	50	3039059279
2 1/2	65	3039059280
3	75	3039059281
4	100	3039059282
6	150	3039059283
8	200	3039059570

All molded flanges are rated at 150 PSI @ 23° C (73° F), non-shock. Standard 150 lb bolting pattern.

CAUTION: When thermoplastic flanges are used with butterfly valves or other equipment, where a full faced continuous support does not exist, a back-up ring or fiberglass reinforcement should be used to prevent cracking of the flange face.

CPVC SCHEDULE 80



close



standard



close



standard

CPVC Nipples 1/4" (6mm) Diameter

Inch	MM	Product Code
close 7/8	22	3020059296
1 1/2	40	3020059306
2	50	3020059316
3	75	3020059317
4	100	3020059318
5	125	3020059319
6	150	3020059320

CPVC Nipples 1/2" (12mm) Diameter

Inch	MM	Product Code
close 1 1/8	28	3020059297
1 1/2	40	3020059308
2	50	3020059322
3	75	3020059321
4	100	3020059324
5	125	3020059325
6	150	3020059326



close



standard



close



standard

CPVC Nipples 3/8" (9mm) Diameter

Inch	MM	Product Code
close 1	25	3020059551
1 1/2	40	3020059307
2	50	3020059552
3	75	3020059939
4	100	3020059554

CPVC Nipples 3/4" (20mm) Diameter

Inch	MM	Product Code
close 1 3/8	35	3020059298
1 1/2	40	3020059309
2	50	3020059327
3	75	3020059328
4	100	3020059329
5	125	3020059331
6	150	3020059332

CORROSION RESISTANT
PRODUCTS & MANUFACTURING



close



standard



close



standard

CPVC Nipples 1" (25mm) Diameter

	Inch	MM	Product Code
close	1 1/2	40	3020059299
	2	50	3020059310
	3	75	3020059333
	4	100	3020059334
	5	125	3020059335
	6	150	3020059336

CPVC Nipples 1 1/2" (40mm) Diameter

	Inch	MM	Product Code
close	1 3/4	45	3020059301
	2	50	3020059312
	3	75	3020059342
	4	100	3020059343
	5	125	3020059344
	6	150	3020059345



close



standard



close



standard

CPVC Nipples 1 1/4" (32mm) Diameter

	Inch	MM	Product Code
close	1 5/8	41	3020059300
	2	50	3020059311
	3	75	3020059338
	4	100	3020059339
	5	125	3020059340
	6	150	3020059341

CPVC Nipples 2" (50mm) Diameter

	Inch	MM	Product Code
close	2	50	3020059302
	3	75	3020059346
	4	100	3020059347
	5	125	3020059348
	6	150	3020059349

CORROSION RESISTANT PRODUCTS & MANUFACTURING LTD.

CPVC SCHEDULE 80



close



standard



close



standard

PVC Nipples 2 1/2" (65mm) Diameter

	Inch	MM	Product Code
close	2 1/2	65	3020059303
	4	100	3020059351
	6	150	3020059352

CPVC Nipples 4" (100mm) Diameter

	Inch	MM	Product Code
close	2 7/8	72	3020059305
	6	150	3020059357



close



standard

CPVC Nipples 3" (75mm) Diameter

	Inch	MM	Product Code
close	2 5/8	67	3020059304
	3	75	3020059353
	4	100	3020059354
	5	125	3020059355
	6	150	3020059356

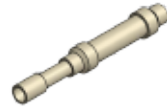
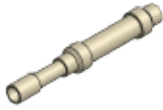
Soc
Spig
Ft
Mt

Solvent Weld Socket
Spigot or plain end
Female iron pipe thread
Male iron pipe thread

*
□

Fabricated fittings
Molded fittings: 150 PSI max.
working pressure, non-shock @ 23°C (73°F)

CRP
CORROSION RESISTANT PIPING
PRODUCTS & MANUFACTURING LTD.

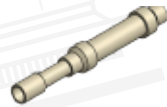
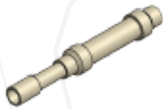


Corzan® CPVC Expansion Joint 6" Travel, EPDM

Corzan® CPVC Expansion Joint 12" Travel, EPDM

Inch	MM	Product Code
1/2	12	3011059973
3/4	20	3011059975
1	25	3011059977
1 1/2	40	3011059979
2	50	3011059981
3	75	3011059983
4	100	3011059985

Inch	MM	Product Code
1/2	12	3011059974
3/4	20	3011059976
1	25	3011059978
1 1/2	40	3011059980
2	50	3011059982
3	75	3011059984
4	100	3011059986



Corzan® CPVC Expansion Joint 6" Travel, Viton®

Corzan® CPVC Expansion Joint 12" Travel, Viton®

Inch	MM	Product Code
1/2	12	3011059959
3/4	20	3011059961
1	25	3011059963
1 1/2	40	3011059965
2	50	3011059967
3	75	3011059969
4	100	3011059971

Inch	MM	Product Code
1/2	12	3011059960
3/4	20	3011059962
1	25	3011059964
1 1/2	40	3011059966
2	50	3011059968
3	75	3011059970
4	100	3011059972

CORROSION RESISTANT PRODUCTS & MANUFACTURING